

lagoon® Advanced Care

Essential set
The perfect complement for any dry-cleaning operation

Features and benefits



Keep customers coming back

Outstanding results for garments of every type thanks to specialized detergents and dedicated programs



Delicate on the delicates

Gentle on fine textiles and wools labelled dry-clean only, as less mechanical action. Woolmark-approved



Rapid return on investment

With a better loading factor, less prespotting, easier finishing and faster process times



Sustainable and eco-friendly

Water-based cleaning with none of the disadvantages of PERC, which can be dangerous to staff



Dry to dry in 1 hour

Smart chemicals and processes mean garments are fully dried in the dryer - no hang-dry

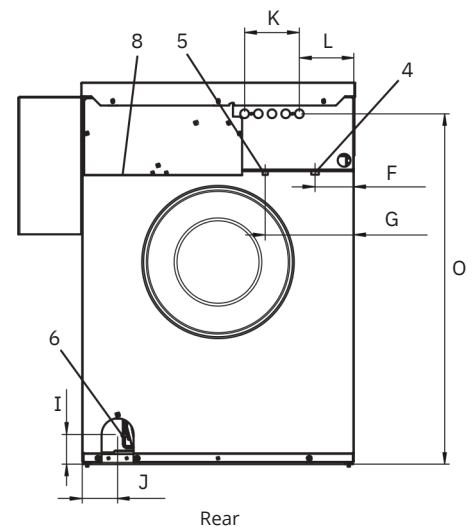
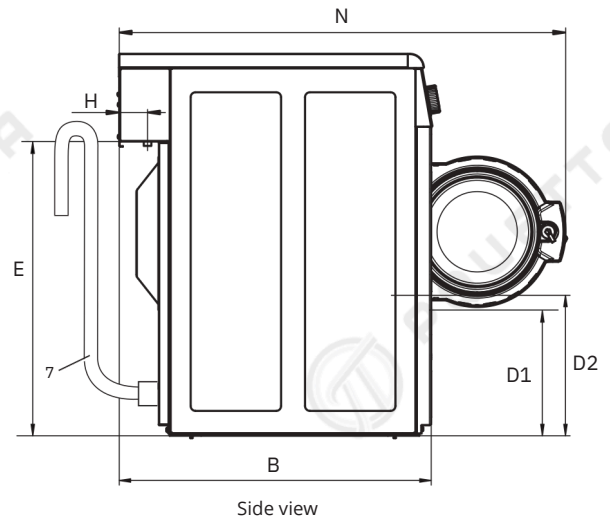
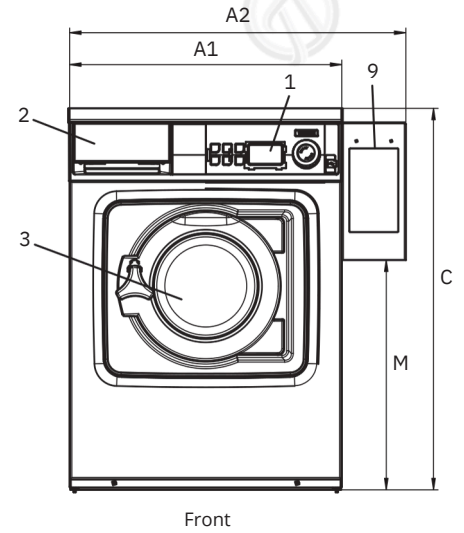


Main specifications				WH6-6LAC	
Rated capacity, Laundry	filling factor 1:9		kg	6	
	Wool filling factor		kg	4	
	Silk 1:15 filling		kg	3	
Drum, volume	factor 1:18		litre	53	
	diameter		ø mm	452	
Extraction			rpm	1450	
G-factor				530	
Heating alternative	electricity		kW	4.4	
Consumption data "lagoon"					
Total time	Wool High		min	22	
	Wool Medium		min	23	
	Silk		min	16	
	Synth. mix Medium		min	20	
	Synth. mix Low		min	17	
Water consumption (cold+hot)					
	Wool High		litre	26	
	Wool Medium		litre	25	
	Silk		litre	25	
	Synth. mix Medium		litre	26	
	Synth. mix Low		litre	25	
Energy consumption (motor/heating/water)					
	Wool High Wool Medium Silk Synth. mix Medium		kWh	0.05/0.25	
	Synth. mix Low		kWh	0.05/0.25	
Consumption data ECO 60 1:9*					
Total time			kWh	0.05/0.3	
Water consumption (cold+hot)			kWh	0.05/0.25	
Energy consumption (motor/heating/hot water)					
Residual moisture			min	50	
* Water temperature 15°C cold water and 65°C hot water.					
			litre	29+10	
			kWh	0.2/0.15/0.6	
			%	45	

Main specifications				TD6-7LAC			
Rated capacity, Drying	filling factor		kg/lb	9.0 / 19.8			
	1:15 filling		kg/lb	7.5 / 16.5			
Drum, volume	factor 1:18		litre	135			
	diameter		ø mm	575			
Heating alternative	electricity		kW	6.			
	gas		BTU/h (kW)	0			
	heat pump		kW	7.			
Consumption data "lagoon"				El	Gas	Heat pump	
Total time	Wool High*		min	23	23	2.	36
	Wool Medium*		min	20	20	3	33
	Synthetic mix**		min	25	25		39
Consumption data***							
Total time			min	30.0	30.0		42.0
Energy consumption (motor/heating/hot water)			kWh	3.23	3.67		1.28
Evaporation			g/min	104	101		73
Energy/Water evaporation			kWh/l	0.99	1.20		0.42
* 1:30 load 100% wool load at 30% initial moisture dried to 0%.							
** 1:40 load 100% synthetic load at 20% initial moisture dried to 0%.							
*** At rated capacity 100% cotton load at 50% initial moisture dried to 0%.							

Electrical connections					
Heating alternative	Main voltage		Heating power kW	Total power kW	Recommended fuse A
	Hz	Hz			
Electric heated	220-240V 1N ~	50/60	2.2/ 2.8	2.4/ 3.0	16
	220-240V 1N ~	50/60	4.4	4.6	20
	220-230V 1N ~	50/60	3.3/ 4.4	3.5/ 4.6	16/ 25
	220-240V 3 ~	50/60	4.4	4.6	16
	220-230V 3 ~	50/60	4.4	4.6	20
	380-415V 3N ~	50/60	4.4	4.6	10
	380-400V 3 ~	50/60	3.3/ 4.4	3.5/ 4.6	10/10
	380-415V 3 ~	50/60	3.6	3.8	10
Non heated	440V/480 3 ~	60	4.0/4.4	4.3/4.7	10
	100-240V 1/1N ~	50/60	-	0.5	10

Water connections		WH6-6LAC
Water valves	DN	20
Water pressure	kPa	200-500
Capacity at 300 kPa	l/min	17
Drain pump	ø mm	20
Draining capacity	l/min	160
Liquid detergent supplies		5
Floor requirements		
Frequency of the dynamic force	Hz	24.2
Floor load at max extraction	kN	1.02 ± 0.3
Sound levels		
Sound power/pressure level at extraction*	dB(A)	70/56
Sound power/pressure level at wash*	dB(A)	56/42
Heat emission		
% of installed power, max		5
Shipping data**		
Shipping volume	net, kg crated, m3	100 0.46
Accessories		
Stainless steel fluff collector		x
Stacking kit with tumble dryer		x
Steel base		x
Dimensions in mm		
A1 Width		595
A2 Width		735
B Depth		680
C Height		830
D1		285
D2		310
E		640
F		85
G		195
H		50
I		65
J		80
K		120
L		120
M		500
N		975
O		765
1 Operating panel	6 Drain valve	
2 Detergent box	7 Drain pump	
3 Door opening ø 255 mm	8 Electrical connection	
4 Cold water	9 Payment system	
5 Hot water		



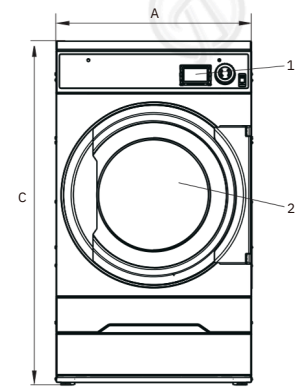
Front and side panels in silver grey and dark blue (color samples can be ordered on part number 472998313).

* Sound power levels measured according to ISO 60704.

** Average data. Crated weight/shipping volume depends on configuration. Please contact logistics for exact measures.

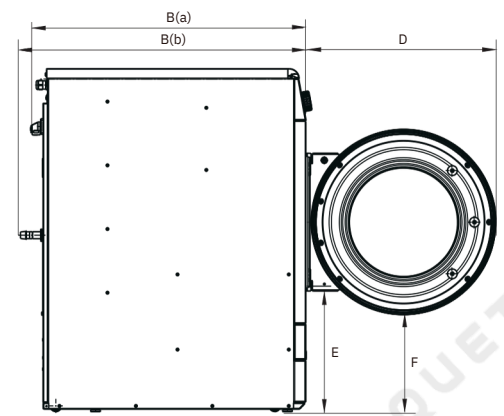
Electrical connections					
Heating alternative	Main voltage		Heating power kW	Total power kW	Recommended fuse A
		Hz			
Electric heated	220-240V 1 ~	50/60	6.0	6.3	32
	220-230V 3 ~	50/60	6.0	6.3	20
	240V 3 ~	50/60	6.0	6.3	16
	380-400V 3 ~	50/60	6.0	6.3	16
	415/440/480V 3 ~ 60	60	6.0	6.3	10
Gas heated	220-480V 1/3 ~	50/60	*	0.3	10

* Total power and recommended fuse does not depend on the heating power in those cases.

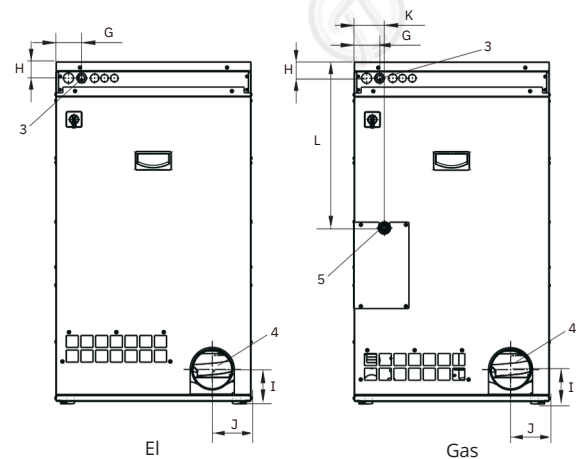


Front

Gas and air connections			TD6-7LAC
Gas		ISO 7/1-R	1/2"
Gas pressure	Natural gas	Pa	2000
	Propane	mbar	20
Air outlet		Pa	2800-5000
		mbar	28-50
Evacuated air,	el 3.0/4.5 kW	Ø mm	125
		m ³ /h	150
Pressure drop	gas 7.0 kW	Max. Pa	220
	el 3.0/4.5 kW	Max. Pa	280
	6.0 kW		350
	gas 7.0 kW		270
			230
Sound levels			
Sound power/pressure level at drying*		dB(A)	63/48
Heat emission			
% of installed power, max			15
Shipping data**			
Weight		kg	109
Shipping volume		crated, m ³	0.81
Dimensions in mm			
A	Width		600
B(a)	Depth, el		845
B(b)	Depth, gas		875
C	Height		1050
D			580
E			385
F			295
G			80
H			50
I			100
J			120
K			90
L			520
1	Operating panel		
2	Door opening Ø 392 mm		
3	Electrical connection		
4	Exhaust connection		
5	Gas connection		



Left side



Rear side

Front and side panels in silver grey and dark blue (color samples can be ordered on part number 472998313).

* Sound power levels measured according to ISO 60704.

** Average data. Crated weight/shipping volume depends on configuration. Please contact logistics for exact measures.



For more information about Efficient Dosing System please refer to the EDS Product Data Sheet

Efficient Dosing System EDS	230V / 50Hz	115V / 60Hz
complete kit with 2 pumps EDS	988916901	988916911
complete kit with 3 pumps EDS	988916902	988916912
complete kit with 4 pumps EDS	988916903	988916913
complete kit with 5 pumps EDS	988916904	988916914
complete kit with 6 pumps EDS	988916935	988916915
Controller EDS 24V Interface	988916937	988916937
	988916941	988916941

Low level alarm	
Power supply	230V AC 50/60Hz
Peak power absorbed	4W
Number of level sensor inputs	7 opto-isolated
Entry probes	Low voltage contact
Degree of protection	IP 65
Alarm output	Relay contact NA250V 8A max.

Description	PNC
Low level alarm	988916610
Low level probe	988916611
LLA & 2 probes	988916612
LLA & 3 probes	988916613
LLA & 4 probes	988916614
LLA & 5 probes	988916615
LLA & 6 probes	988916616

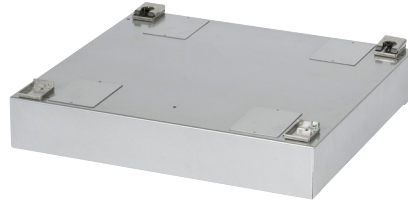
Electrolux Professional name and description	Packaging 20 litres	Packaging 10 litres
W01 - lagoon Sensitive Detergent Professional detergent for natural/animal fiber	432731085	432731086
W03 - lagoon Sensitive Conditioner Professional conditioner for natural/animal fiber	432731087	432731088
W02 - lagoon Delicate Detergent Professional delicate universal detergent	432731089	432731090

For further information including spotting agents, please refer to the lagoon detergent Product Data Sheet



BASE; open front and sides with wheels


Suitable for models: TD6-7LAC
 988918477 Height: 370 mm
 Material: Stainless steel
 988918478 Height: 370 mm
 Material: Galvanised, silver grey painted

BASE; closed front and sides


Suitable for models: WH6-6LAC
 988918473 Height: 100 mm
 Material: Stainless steel
 988918474 Height: 100 mm
 Material: Galvanised, silver grey painted

BASE; closed front and sides with wheels


Suitable for models: TD6-7LAC
 988918475 Height: 100 mm
 Material: Stainless steel
 988918476 Height: 100 mm
 Material: Galvanised, silver grey painted

BASE; closed front and sides


Suitable for models: WH6-6LAC
 988918483 Height: 290 mm
 Material: Stainless steel front and galvanised, silver grey painted sides
 988918484 Height: 290 mm
 Material: Galvanised, silver grey painted front and sides
 988918485 Height: 290 mm
 Material: Galvanised, silver grey painted front and sides
 988918486 Height: 290 mm
 Material: Stainless steel front and galvanised, silver grey painted sides
 Special version "floating foundation" - concrete filled
 Galvanised, silver grey painted front and sides
 Special version "floating foundation" - concrete filled
 290 mm

STACKING KIT with or without base


Suitable for models: WH6-6LAC with TD6-7LAC
 988918479 Stainless steel stacking kit without the base Galvanised, silver grey
 988918480 painted stacking kit without the base Stainless steel stacking kit with
 988918481 + 988918473 the base included Galvanised, silver grey painted stacking with the
 988918482 + 988918474 base included Stainless steel stacking kit, when re-using existing base
 988918481 Galvanised, silver grey painted stacking, when re-using existing base
 988918482